

VISIONTRACK

THE NEXT GENERATION OF TELEMATICS
AND INTEGRATED CAMERA SOLUTIONS

VT2000

INSTALLATION GUIDE



THE UK'S MOST AWARD-WINNING CAMERA TELEMATICS COMPANY



www.visiontrack.com

Overview

The **VT2000** is a full-HD 1080p connected vehicle telematics camera, featuring instant remote cloud upload, live view snapshots, automatic health checking, built-in GPS/GLONASS, designed to deliver high-quality videos of incidents instantly to our data platform.



Key Features:



Industry-leading, connected and HD-quality vehicle camera and telematics system



High-quality super-wide viewing angle



Provides HD images before, during and after an incident



Monitor driver behaviour from anywhere using the VisionTrack cloud platform



Provides First Notification of Loss (FNOL) alerts



Accurate G-shock sensor measures impact force and driving style



Built-in GPS and GLONASS receiver with self-checking notifications



Full integration with HERE maps with accurate speed limit data

IMMEDIATE

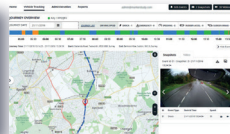
ACCESS TO SPEED, G-FORCE, IMAGES AND VIDEOS WHEN AN INCIDENT OCCURS

POWERFUL

CLOUD-BASED SOFTWARE PLATFORM OFFERING NEAR REAL-TIME MONITORING OF VEHICLES & DRIVER BEHAVIOUR

INSTANT

FIRST NOTIFICATION OF LOSS (FNOL) ALERT SO USERS CAN SEE WHO WAS AT FAULT



What's in the box:



1. VT2000 Vehicle Recorder



2. VT2000 Power Kit Cable



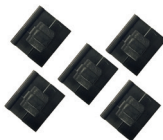
3. 3M™ Pad (x2)



4. User Guide

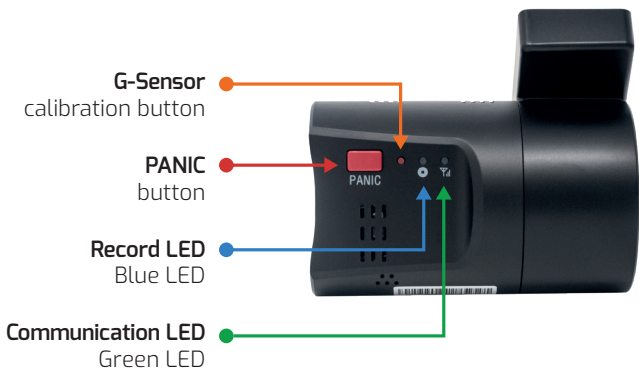
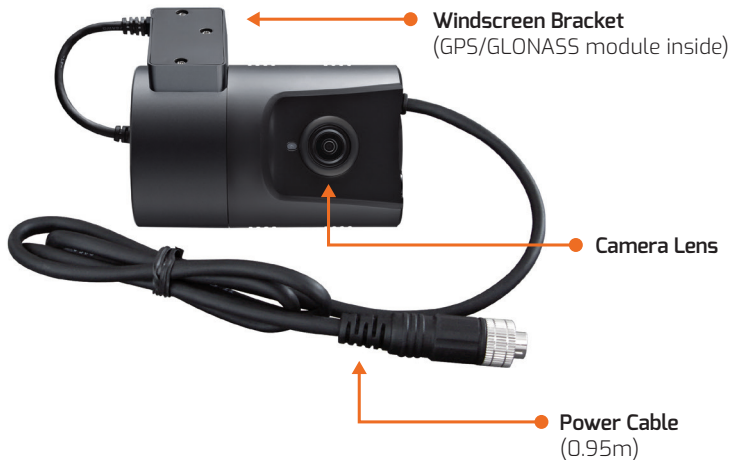


5. Security Seal (x2)



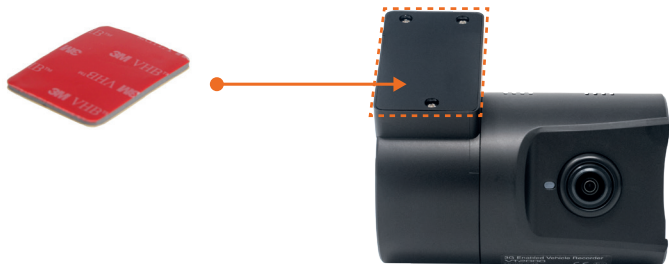
6. Wire Splice Clips (x5)

VT2000 Details:



VT2000 Installation:

1. Provided is a 3M™ adhesive pad, please attach to the **VT2000** bracket. Once attached, press firmly onto the windscreen. (See page 5 for mounting position)

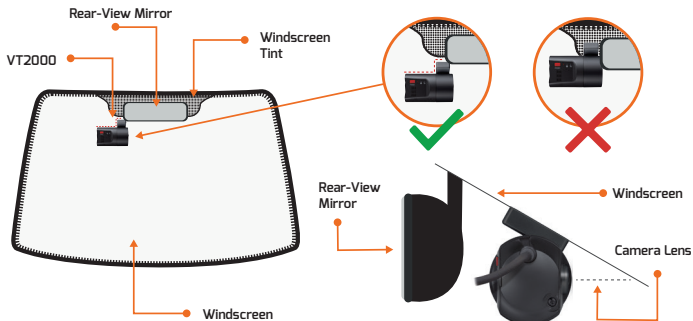


2. Adjust the bracket on the **VT2000** up or down, depending on the specific angle of your windscreen.



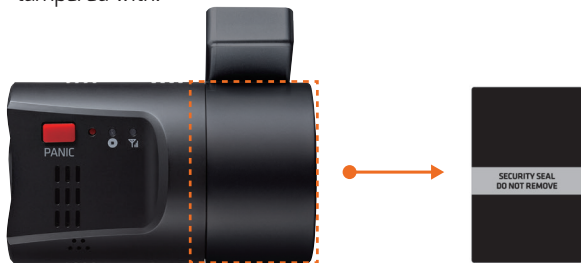
3. IMPORTANT: Degrease and clean windscreen before attaching.

After the windscreen is clean, secure the **VT2000** behind the rear-view mirror, below the windscreen tint. Place the camera as high on the windscreen as possible, but still within the windscreen wiper area.



DO NOT APPLY CAMERA TO TINTED WINDSCREEN SURROUND. MUST BE STUCK TO CLEAR GLASS TO AVOID ANY GPS SIGNAL INTERFERENCE.

4. Once the **VT2000** is secured onto the windscreen, please attach the security seal onto the angle lock, ensuring that the device cannot be tampered with.



NOTE: If the security seal is removed, the seal will display 'VOID/OPEN', suggesting that the camera may have been tampered with.

VT2000 Wiring:

1. Line up the arrows on the cables to connect the **VT2000** with the power kit cable. Once the arrows are lined up, push together and twist the silver plate to secure connection.



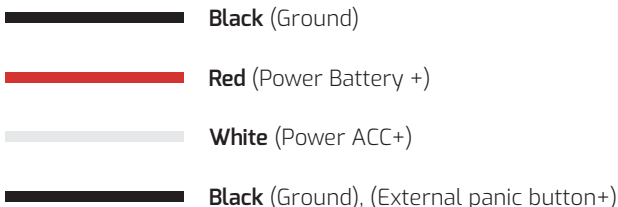
2. After connecting the power kit cable to the **VT2000** power lead, fix the power kit cable roughly where it will run. Once the cable is in the correct position, secure the power kit cable into the headlining and down the A-Pillar.

Power Kit Cable*



3. Position the power kit cable around and behind the vehicle's interior panels down towards the fuse box or power source. Ensure the vehicle ignition is off and connect the required wires to the vehicle, as displayed below in the power kit cable wiring diagram.

Power Kit Cable* Wiring Diagram



* The power kit cable can be used for extended recording for up to 24 hours when the vehicle's ignition has been turned off. Additionally, the power kit cable enables the camera to report into the platform with its built-in heartbeat function for health check purposes.

OPTIONAL: VT-PANIC BUTTON & VT-PANIC-LED

In the event of an incident, the **VT-PANIC** BUTTON allows drivers to send alerts to the VisionTrack software platform,



VT-PANIC (Power)

Alarm In, NC/ON



VT-PANIC-LED* Wiring Diagram

VT-PANIC-LED White Cable
(Alarm in)



VT2000 Orange Cable
(Alarm in)



VT-PANIC-LED Red Cable
(Power in 12/24v)



VT2000 Red Cable
(Power)



VT-PANIC-LED Black Cable
(Ground in)



VT2000 Black Cable
(Ground)



* Please note that the config tool needs to be set for Alarm 1 V-On. The LED on the **VT-PANIC-LED** should be in a state of **GREEN**, press to change to **RED** which will activate the panic button, the VT2000 **BLUE** LED will flash to show this has worked, the **VT-PANIC-LED** should be left in a **GREEN** state.



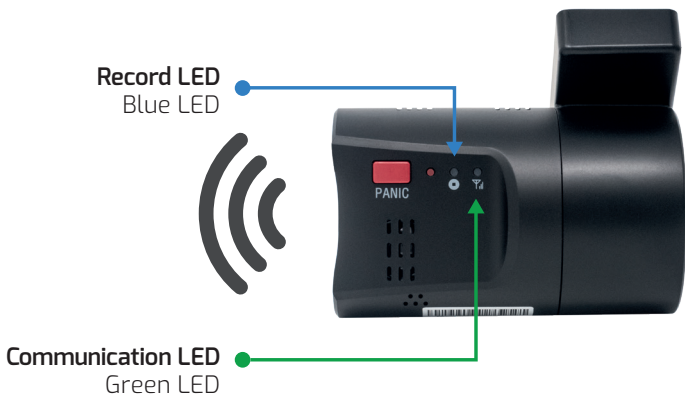
Standby
Green LED



Active
Red LED

VT2000 Calibration:

1. On start-up, the **GREEN** light will flash and the **BLUE** light will stay solid, once the camera is operational you will hear an audio beep.



2. Park your vehicle on a flat surface and press and hold calibration button for **5 seconds**, the camera will beep again.



3. The camera is active and connected when the **GREEN** and **BLUE** lights are solid. **LEAVE FOR 5 minutes** and call our technical support team on **01246 223 152**, where you'll receive a commission number. **PLEASE KEEP YOUR COMMISSION NUMBER SAFE.**



WARNING! On **installation** please leave camera to boot up completely for approximately 5 minutes and **call VisionTrack support team** on **01246 223 152** to confirm camera install is complete. If you do not do this it will **INVALIDATE** the warranty.



THE UK'S MOST AWARD-WINNING CAMERA TELEMATICS COMPANY



VISIONTRACK

www.visiontrack.com

VT2000 INSTALLATION GUIDE

VISIONTRACK

2 Chapman Way
High Brooms Industrial Estate
Tunbridge Wells
Kent
TN2 3EF



Visiontrack Official Website